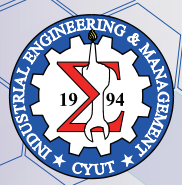


Industrial Engineering and Management



Introduction

The Department of Industrial Engineering and Management was founded in 1994, and the Graduate Institute was established in 1996. The department offers undergraduate degree programs (Bachelor of Science) and graduate degree programs (Master of Science) for full-time and continuing education students. Our mission is making our students capable of utilizing engineering methods to improve processes that involves constrained resources such as people, material, equipment, money, and information. All faculty members have PH.D degree and industry experiences. The department has well-designed curriculum programs, and various professional lab facilities for students to study and practice. This makes the department an ideal ambience to train students having the abilities to fulfill the industry requirement.



Overseas study

Feature

The Bachelor Degree and the Master Degree programs are accredited by Institute of Engineering Education Taiwan (IEET) with Engineering Accreditation Criteria (EAC). The diplomas are recognized by the member nations of the Washington Accord.

Our curriculum emphasize the development of practical skill through hands-on lecture, training program, corporate program, internship, and keystone project.

The faculty are actively engaged in research and industrial projects from public and private sectors. In addition to Research Assistant (RA) funding, students can acquire the ability to discover and solve problems by participating in the projects.

The department receives funding from Ministry of Education (MOE) to further enhance our facilities, such as Injection Molding Machine, Computer Numerical Control (CNC) machine, Mechatronics Control, Reverse Engineering equipment and 3D printers.

Students have the opportunities to expand their global perspective by becoming CYUT Elite Students, joining student exchange program, or by attending international conferences.

Practical course



Interim report



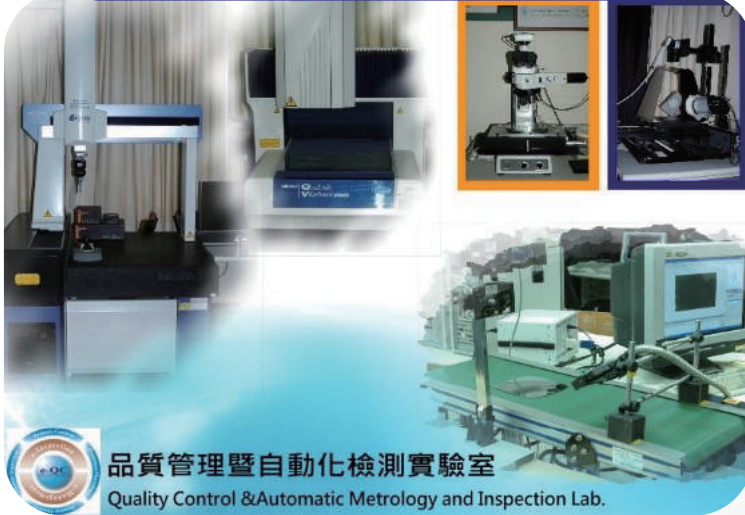
CNC Practical course



Final report



Automatic metrology and Inspection Equipments



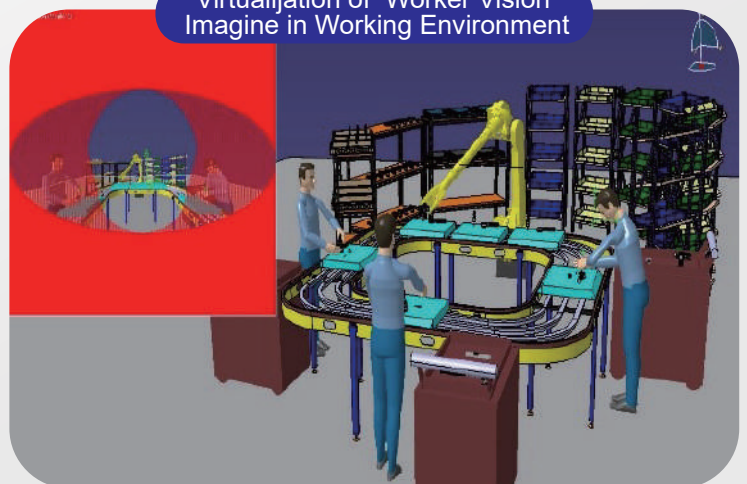
Integrated Training for Electromechanics



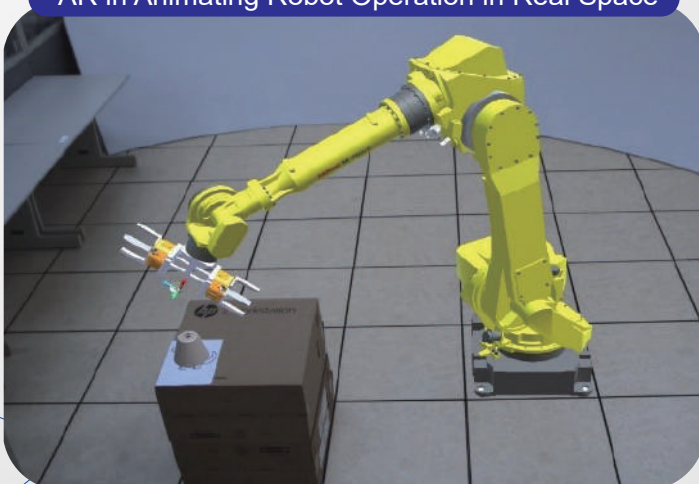
Health Promotion Center for Sub-Health Group



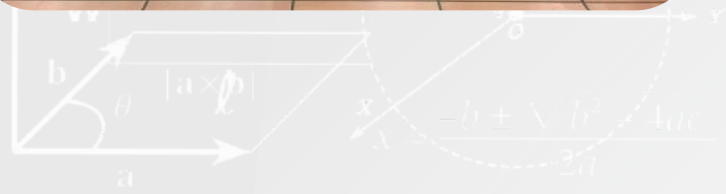
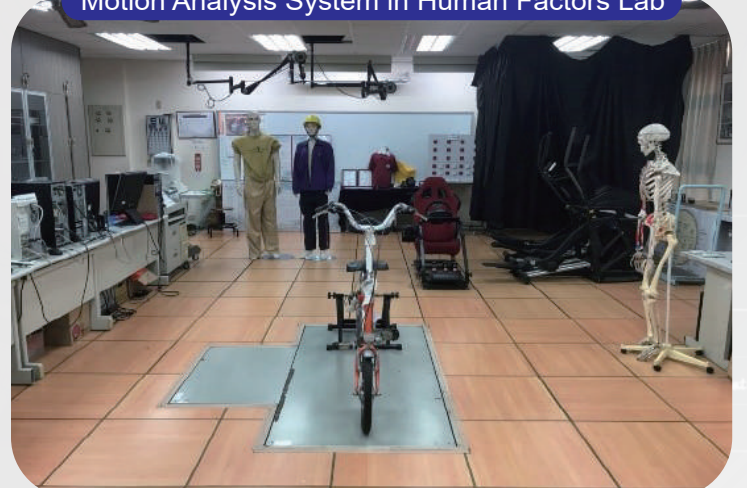
Virtualization of Worker Vision
Imagine in Working Environment



AR in Animating Robot Operation in Real Space



Motion Analysis System in Human Factors Lab



Curriculum

The department lays out the curriculum according to the talent needs of the industries. The full spectrum of the curriculum spans the fields of “Integration of Production Planning and Control”, “Human Factors”, “Production System”, and “Business Management”, each has an outcome-based learning map that foster the development of diverse skills the industries expect from an Industrial Engineering and Management professional.

Undergraduate Program

Integration of Production Planning and Control

Manufacturing Process Engineer,
Process Information System Engineer

Business Management

Planning Specialist, Manager

Production System

Production Management Engineer,
Quality Management, Quality Assurance Engineer

Human Factors

Safety and Hygiene Technician, Human Factors Engineer, Product Research and Development Engineer

Graduate Program

Human Factors Engineering

Research Methods for Human Factors,
Man-Machine Interface

E-Business

Advanced Electronic Commerce,
Advanced Supply Chain Management

Business Operation and Management Science

Advanced Operations Research,
Advanced systems simulation

Production System

Advanced Quality Management,
Advanced Quality Engineering

Lab. and Research Center

The department sets up laboratories, practice factory, training center, and office space to meet the requirement of vibrant teaching and learning.

- Specialty Lab - Quality Control & Automatic Metrology and Inspection Lab
- Specialty Lab - Human Factors Lab
- Specialty Lab – Research Center for Health Promotion of Sub-health Group
- Specialty Lab - Virtual Manufacturing and Simulation Lab
- Total Productive Maintenance (TPM) Training Center
- Mechatronics Control Lab
- Reverse Engineering Lab
- Quantitative Analysis and Production Decision Lab
- Manufacturing Practice Factory
- Graduate Research Room



Equipments in QC & AMI Lab

Faculty

Name	Title	Education	Specialty
Chan, Chu-Chai	Professor	PhD, Industrial Engineering, University of Iowa	Management Information System, Enterprise Resource Planning, Electronic Commerce
Chiu, Yuan-Shyi	Professor	PhD, Industrial Engineering and Operations Research, Polytechnic University, New York	Operations Research, Production/Operation Management, Inventory Control, Management Information System, TPM practices
Liaw, Ching-Fang	Professor	PhD, Industrial Engineering, University of Michigan	Operations Research, Production Scheduling
Lin, Hong-Dar	Professor	PhD, Industrial Engineering, University of Missouri	Computer Vision, Inspection Automation, Quality Control
Wu, Hsin-Chieh	Professor	PhD, Industrial Engineering and Engineering Management, National Tsing Hua University	Ergonomics, Industrial Safety and Hygiene, Engineering Economics, Quality Management
Cheng, Chun-Yuan	Associate Professor	PhD, Industrial Engineering, Auburn University	Applied Reliability Analysis, Statistics, Quality Management
Horng, Horng-Chyi	Associate Professor	PhD, Industrial Engineering, Arizona State University	Computer Integrated Manufacturing, Systems Simulation, Quality Management
Hsu, Chun-Chin	Associate Professor	PhD, Industrial Engineering and Management, National Chiao Tung University	Researches on Integrating SPC & EPC, Neural Network Models & Applications, Quality Engineering, Industrial Engineering and Management
Lee, Ying-Lien	Associate Professor	PhD, Industrial Engineering and Engineering Management, National Tsing Hua University	Information system development, Human Factors, Human-Computer Interaction
Sun, Te-Hsiu	Associate Professor	PhD, Industrial Education, National Changhua University of Education	Human Resource Management, Organization Theory
Sung, Peng-Cheng	Associate Professor	PhD, Department of Environmental Health Science, University of California, Los Angeles	Occupational Ergonomics, Occupational Safety and Health, Computer Control of Manufacturing Systems, Job Analysis; Motion and Time Study
Tseng, Chao-Tang	Associate Professor	PhD, Department of Business Administration, National Taiwan University of Science and Technology	Financial Management, e-Commerce, Collective Intelligence, Production Scheduling
Wang, Ming	Associate Professor	PhD, Industrial Engineering, University of Wisconsin at Madison	Reliability-Centered Maintenance, Risk Analysis, Decision Analysis, Operations Research
Lee, Cheng-Lung	Assistant Professor	PhD, Mechanical Engineering, State University of New York at Buffalo	Ergonomics, Industrial Safety and Hygiene
Lin, Justin J.Y.	Assistant Professor	PhD, Department of Mechanical and Aerospace Engineering, Arizona State University	Computer-Aided Research & Development, Machine Design, Integration of e-Manufacturing and e-Commerce
Lin, Yung-Ping	Assistant Professor	PhD, Industrial Education and Engineering Management, National Tsing Hua University	Ergonomics, Industrial Automation, Smart Manufacturing, RFID Applications

Contact

Address: 168 Jifong E. Rd., Wufong District, Taichung City, 41349, Taiwan
 Phone: +886-4-23323000#7031,7032,7033
 Fax: +886-4-23742327 / Web: <http://iem.cyut.edu.tw/>
 Buildings: E-508, Science and Engineering Building.
 Email: iem@cyut.edu.tw